



Students' Struggles and Society: LesBiTrans Migration, Academic, and Employment Experiences in Korea

Chelle Jones

Invited Lecturer, Sexual Violence Prevention, *Korean universities*

**US Dept. of State & Sungkyunkwan Univ. Center for Human Rights
Fulbright Dissertation Research Grantee, 2017-18**

**University of Michigan, PhD Candidate in Sociology
MA Sociology & Certificate in LGBTQ Studies, 2017**

Seoul National University, MA in Korean Studies, 2014

Workshop Agenda

(most is redacted from this PDF)

Goals

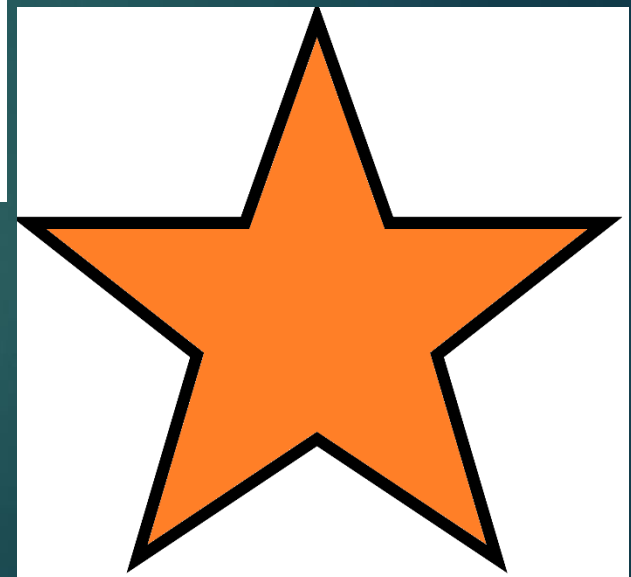
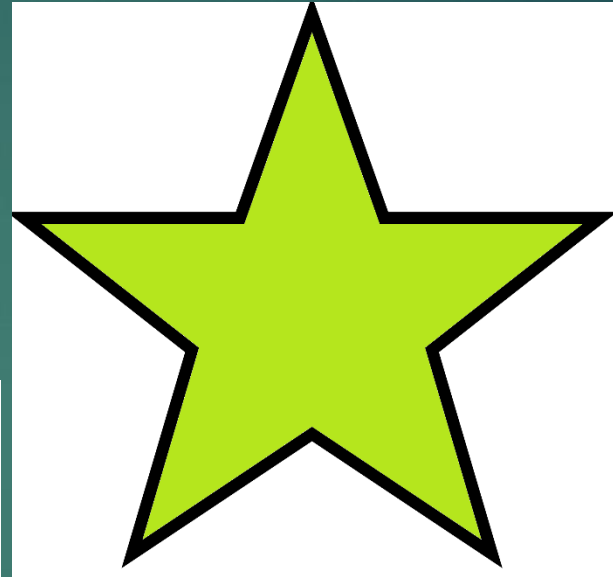
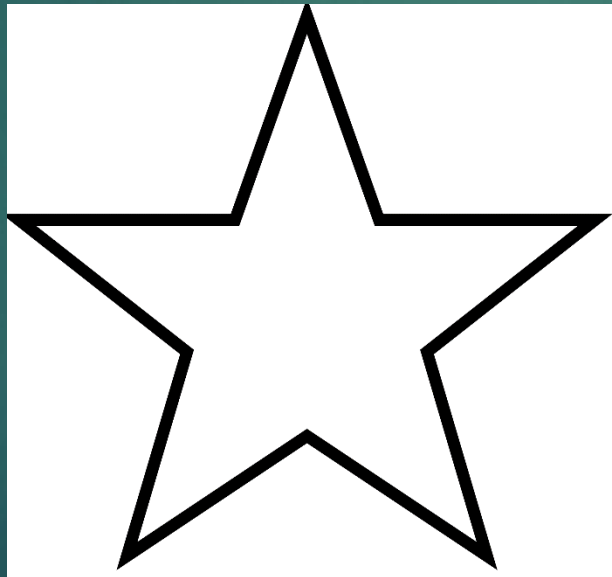
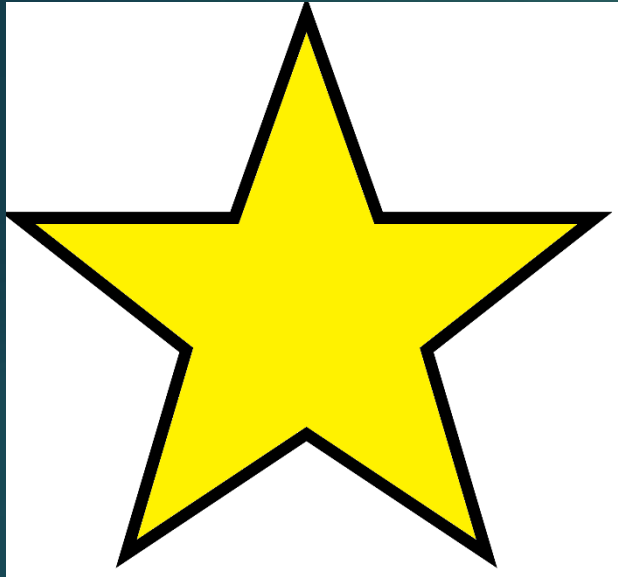
- ▶ Define and distinguish sex, gender, and sexuality.
- ▶ Identify shifts in contemporary Korean society.
- ▶ Consider how to apply these insights to our own projects.

Evidence we'll consider:

- ▶ Survey data
- ▶ Law / Policy
- ▶ Interview data
- ▶ Ethnography
- ▶ Archival documents

Activity: Identity Star

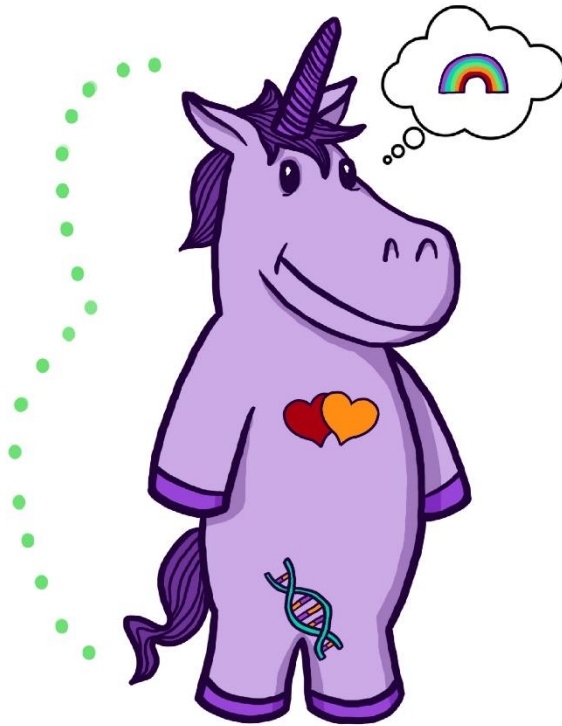
(see handout)



Have you met the Gender Unicorn?

The Gender Unicorn

Graphic by:
TSER
Trans Student Educational Resources



To learn more, go to:
www.transstudent.org/gender

Design by Landyn Pan and Anna Moore

Surveys Demonstrate Rapid Gains in LGB Acceptance in South Korea

Change in LGB Acceptance
over ~5 years

% Homosexuality should be accepted	2007 %	2013 %	Change
S. Korea	18	39	+21
U.S.	49	60	+11
Canada	70	80	+10
Italy	65	74	+9
Spain	82	88	+6
Germany	81	87	+6
Britain	71	76	+5
Japan	49	54	+5
Kenya	3	8	+5
Chile	64	68	+4
China	17	21	+4
Argentina	72	74	+2
Israel	38	40	+2
Egypt	1	3	+2
Mexico	60	61	+1
Malaysia	8	9	+1
Uganda	3	4	+1
Lebanon	18	18	0
Indonesia	3	3	0
Ghana	4	3	-1
Czech Rep.	83	80	-3
Poland	45	42	-3
Jordan	6	3	-3
Russia	20	16	-4
Turkey	14	9	-5
Palest. ter.	9	4	-5
France	83	77	-6

Only countries surveyed in 2007 and 2013 shown.
PEW RESEARCH CENTER Q27.

Percentages by Age Cohort

% Homosexuality should be accepted	18-29 %	30-49 %	50+ %
U.S.	70	64	52
Canada	87	82	75
Britain	79	82	71
France	81	79	74
Germany	87	90	84
Italy	86	80	67
Spain	90	91	85
Greece	66	62	40
Poland	47	43	38
Czech Rep.	84	87	72
Russia	21	17	12
Turkey	9	7	10
Egypt	3	2	3
Jordan	5	1	1
Lebanon	27	17	10
Palest. ter.	5	3	--
Tunisia	3	2	1
Israel	40	44	35
Australia	--	83	77
China	32	19	15
Indonesia	4	2	3
Japan	83	71	39
Malaysia	7	10	11
Pakistan	2	2	2
Philippines	78	71	68
S. Korea	71	48	16

Research Topic: My dissertation research centers the migration of lesbian, bisexual and queer women, and transgender (LBTQ) migrants to and from South Korea. I examine how legal, medical, economic, and social structures affect LBTQ migrant's inter-personal, kin, romantic, and chosen relationships, particularly those in mixed-citizenship relationships.

Research Presentation Outline

(content redacted from PDF)

- ▶ Hypotheses
- ▶ Data Collection & Methodology
- ▶ Tentative Analysis
- ▶ Resources

THANKS FOR YOUR ATTENTION!

CONTACT ME VIA EMAIL AT MLEJONES@UMICH.EDU


Some LGBT Community Resources Useful for Educators:

You may share this slide if you like 😊

https://www.ddingdong.kr/xe/notice/2013

Hello! We are DDing Dong! (English Information) 명동

https://www.ddingdong.kr/xe/2013 6086 2015.07.14 18:00:05 (*.48.49.251)



DDing Dong
LGBTQ Youth Crisis Support Center

 **LGBTQQIPAA Teachers in Korea**

LGBTQQIPAA Teachers in Korea

Secret Group

About

Discussion

Members

Events

Photos


Files

2018 Summer Queer Culture Festival




www.ishap.org/?c=1/8/37

● 서울 iSHAP센터 오시는 길 **Near Jongno3Ga**



● 부산 iSHAP센터 오시는 길 **Near Beomildong station in Busan**



iSHAP
IVAN STOP HIV/AIDS PROJECT

서울센터 : 서울시 종로구 낙원동 109-1 · Tel.02-792-0083 · Fax.02-744-9118
 부산센터 : 부산시 동구 범일2동 917-5 2층 · Tel.051-646-8088 · Fax.051-646-8089
 copyrights © 2013 www.ishap.org. All right reserved.



LAAN
LGBTQIA AND ALLIES IN KOREA

www.lgbtkorea.org
www.facebook.com/groups/lgbtkorea