



# Gwangju Communicator

Newsletter of the Gwangju-Jeonnam Chapter of Korea TESOL

April 2017

## Digital Citizenship: Character Education in Action

By James G. Rush, II

Participants will be introduced to key elements of Digital Citizenship and Character Education using active learning strategies. These techniques can be helpful for creating an engaging atmosphere. Also, the approaches can be done for any EFL lesson. For our purposes, the core concepts of digital citizenship (DC) and character education (CE) will be discussed and defined. (CE programs and curriculums often include specific instruction on "citizenship.")

During the first portion of the session, James will provide ways to better understand the history and current state of these topics as they have appeared in the news locally here in South Korea and globally. This experience will then turn into an "unworkshop" because there are nuances related to grade and maturity levels. These differences can make a huge difference in how we teach, guide, and lead our students. We will collaborate and communicate just like we want our students to do in our classes. In the

end, you will come away with relevant information and helpful strategies for preparing your students to create a better tomorrow through their contributions as a digitally savvy citizen

### THE PRESENTER

James G. Rush, II, is at Luther University in Yongin,



Gyeonggi-do. He arrived in September and joined the Yongin KOTESOL Chapter in December. James prefers project-based learning endeavors like service learning and civic engagement. He earned a BA in secondary, business education from Concordia University of

Wisconsin and a TEFL certification from E.L.I.C., in partnership with Wheaton in Illinois. In 2012, he completed his MA in educational technology from the University of Michigan-Flint, USA.

*James will present on digital citizenship at the April 15th meeting of the Gwangju-Jeonnam Chapter of KOTESOL at Gwangju National University of Education (Room 811).*



*The Gwangju Communicator*, the monthly newsletter of Gwangju-Jeonnam Chapter of KOTESOL, is prepared by David Shaffer.  
Korea TESOL: Korea Teachers of English to Speakers of Other Languages

## Gwangju-Jeonnam Chapter Officers: 2016-17

### President

William "Bill" Mulligan  
Kwangju Women's University  
Email: fsubilltesol@gmail.com



### Membership Coordinator

Cara Scott  
Chonnam National University  
Email: cscottcnu@gmail.com



### Vice-President

Dr. David E. Shaffer  
Email: chosunu@yahoo.com  
Phone: 010-5068-9179



### Officer-at-Large

Bryan Hale  
Sunkyung Academy, Gwangju  
Email: bryan.english.teacher@gmail.com



### Treasurer

Lindsay Herron  
Gwangju Natl. University of Ed.  
Dept. of English Education  
Email: lherron@gmail.com



### Officer-at-Large

Jocelyn Wright  
Mokpo National University  
Dept. of English Lang. & Literature  
Email: jocelynmnu@yahoo.com



### Officer-at-Large

Gene Shaffer  
Gwangju  
Email: spiritmonger@naver.com



### Join Korea TESOL

Gwangju-Jeonnam Chapter  
<http://www.koreatesol.org/>



### Chapter Email Address

gwangju\_kotesol@yahoo.com  
gwangju@koreatesol.org

### Chapter Website

<http://koreatesol.org/gwangju>



### Facebook

Gwangju-Jeonnam KOTESOL  
[www.facebook.com/groups/GwangjuKOTESOL/](http://www.facebook.com/groups/GwangjuKOTESOL/)



## Joining Korea TESOL

**Who May Join:** English teachers of any level or nationality are eligible to join KOTESOL. We welcome native and non-native speakers teaching at primary schools, secondary schools, language institutes, colleges and universities, and other organizations. University students may join as student members.

### What Memberships Types Are Available?

- **Regular 1-Year Membership:** 50,000 won.
- **Lifetime Membership:** 500,000 won. Student and International Membership options are also available.

**How to Join:** Apply by using the online membership form at <http://www.koreatesol.org/>. On the front page, click on "Join KOTESOL" in the menu, and follow the directions.

Alternately, paper membership application and renewal forms are available at Chapter meetings for those who prefer making a hard-copy application with Chapter assistance.

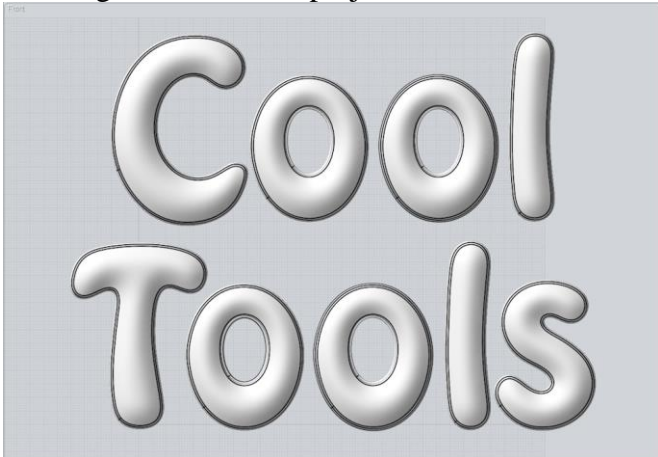
### Membership payment may be made by:

- Bank transfer to **KOTESOL:** KEB-Hana bank account number 299-890069-83204.
- Payment in cash to the Chapter Membership Officer at a Chapter Meeting.

# Cool Tools for Cultivating Creativity

By Lindsay Herron

With the proliferation of the internet and a plethora of free, intuitive tools available online, now is the perfect time to incorporate creative projects into your class! The internet proffers portability as well as online tools that facilitate the creation of eye-catching, multimodal projects. The internet also



makes it easy to collaborate, explore others' creations, and share final products with an authentic audience. Aimed at teachers seeking to capitalize on these advantages, this presentation will provide an overview of exciting online tools that are free, easy to use, and generally ideal for teachers seeking to cultivate creativity through digital media.

Among the tools presented will be several for creating videos of varying lengths, including Adobe Spark, Animoto, My Simple Show, and Flipagram; tools for telling stories, including Storybird, Phrase It, and Marvel Comics Create Your Own Comic; and tools students can use to create interactive games for their friends, infographics, or even "Fakebook" pages for characters.

Attendees will leave the workshop with new ideas and enthusiasm for effectively integrating tech-based projects into their teaching, helping to make their classes both more multimodal and motivating.

NOTE: Attendees will have an opportunity to try out several tools for themselves; bringing a smartphone pre-loaded with a QR-reader app is encouraged.

## THE PRESENTER

**Lindsay Herron** has been a visiting professor at Gwangju National University of Education in Gwangju since 2008. She has master's degrees in language education and cinema studies, bachelor's degrees in English literature and psychology, a CELTA, and the CELTA YL Extension. She is currently working on a doctorate in Literacy, Culture, and Language Education at Indiana University-Bloomington, and also is serving as the national president of KOTESOL.



*Lindsay Herron will lead this session on online tools at the April 15th meeting of the Gwangju-Jeonnam Chapter of KOTESOL at Gwangju National University of Education (Room 811).*





## Gwangju-Jeonnam KOTESOL April Chapter Meeting

- Time: Saturday, April 15, 2017, 1:45–5:00 p.m.
- Place: Gwangju Natl. University of Ed., Teacher Training Bldg., Room 811 (1st Floor)

### ■ Schedule: Chapter Meeting, Main Session

**1:45 pm:** Sign-in and Meet-and-Greet (Admission is free for first-timers. Future membership is welcomed.)

**2:00 – 2:50 pm: PRESENTATION 1**  
***Digital Citizenship: Character Education in Action***  
 James G. Rush, II (Luther University)

**2:50 – 3:15 pm: Refreshment Break**

**3:15 – 4:05 pm: Presentation 2**  
***Cool Tools for Cultivating Creativity***  
 Lindsay Herron (Gwangju National University of Education)

**4:15 – 4:45 pm: SwapShop Session (Open to All)**  
 Everyone is encouraged to share their Teaching Discoveries and Secrets with the group.  
 Share your Teaching Tips, Ideas, Classroom Activities, Games, ELT Books, or other Teaching Wisdom. (Handouts welcomed.)

**4:45 – 5:00 pm:** Announcements / Drawing for Door Prizes / Closing

After-Meeting Dinner at The First Alleyway downtown.

## Upcoming Chapter Events

**May 20, 2017. Monthly Chapter Meeting.**  
 Gwangju National University of Education

**June 10, 2017. Monthly Chapter Meeting.**  
 Gwangju National University of Education

## Upcoming KOTESOL Events

**May 13-14, 2017.**  
**FAB11 & KOTESOL National Conference**  
*Boosting the Power of ELT – FABulously*  
 Sookmyung Women's University, Seoul

FAB is a series of conferences on neuro-ELT: relating current brain research to better teaching practices.

### Reflective Practice SIG

Morning Meeting (11:00-12:30)

***Next Meeting: May 20***

Jocelyn Wright facilitating.

*At Coffee Lab Mujii (Woori Church)*